

RUBIX

4 SNOW HILL

ECT

A period office building just moments from City Thameslink & Farringdon Station

4 Snow Hill is newly refurbished and fully fitted benefiting from a private terrace and private meeting rooms, perfect for any occupier.



AMENITIES



NEWLY REFURBISHED OFFICE SPACE



AIR CONDITIONING



LED LIGHTING



24/7 ACCESS



BIKE & SHOWER FACILITIES



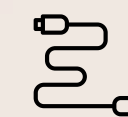
PRIVATE TERRACE



22-24 DESKS

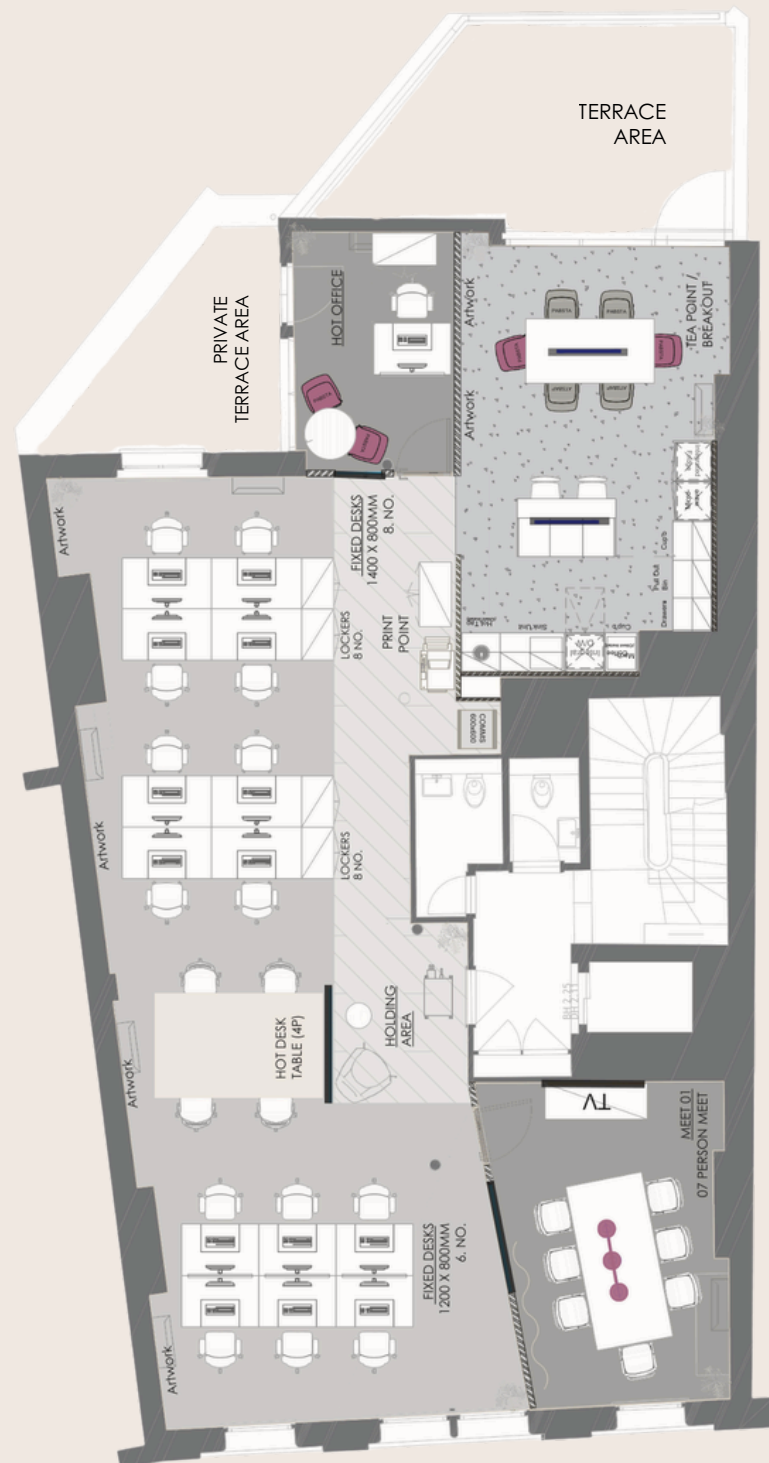


PASSENGER LIFT



FIBRE INSTALLED

FLOOR PLAN



AVAILABILITY

FLOOR	SQ M	SQ FT	RENT/PSF	RATES/PSF	S/C PSF	TOTAL/MONTH
3rd	135.92	1,463	£65.00	£18.05	£11.75	£11,557.70

KEY

10 person board room
and 2 hot desks

Print hub and call pod

Holding/welcome area

Break out and tea point

4 person meeting room ideal for team
discussions and client presentations

Impressive period features

TERMS: NEW LEASE DIRECT FROM THE LANDLORD

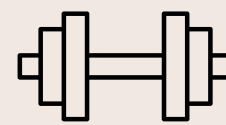
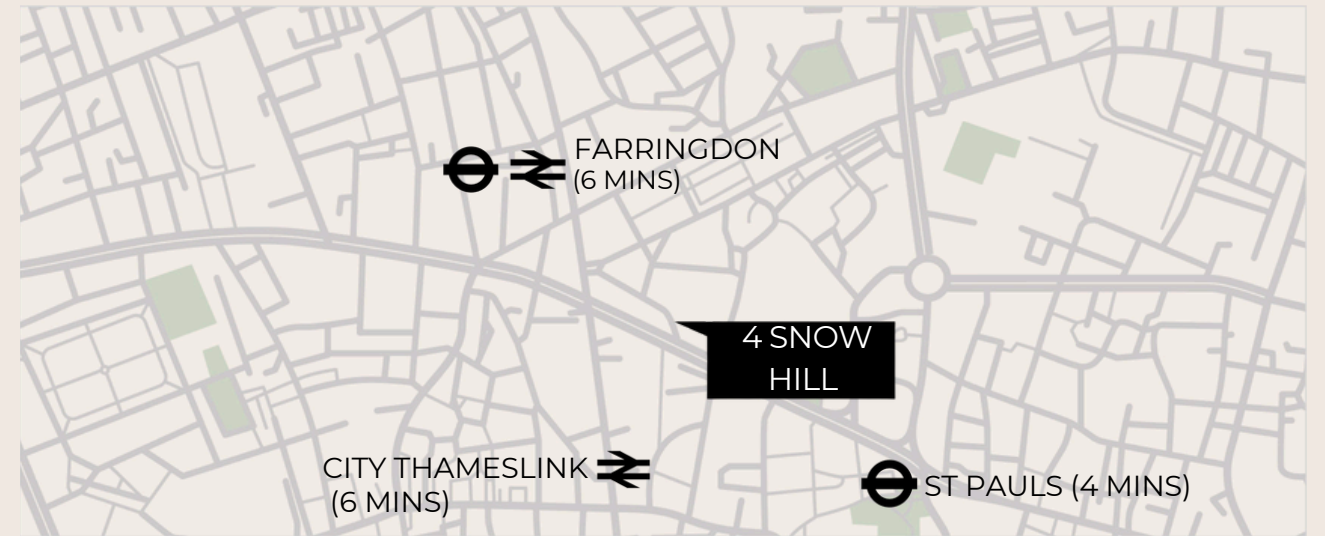
Located on the corner of Snow Hill and Farringdon Street, 4 Snow Hill delivers a turnkey office solution in the heart of EC1, just moments from Farringdon and City Thameslink stations.

This thoughtfully fitted workspace blends contemporary design with charming period features, offering a layout that supports focused work, team collaboration, and client meetings. With breakout areas, private meeting rooms, and access to a rooftop terrace, it's an inspiring space that's ready for immediate occupation.

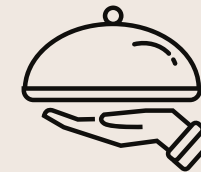
THE CITY



LOCATION



Virgin Active
PureGym



LEYDI
Ibai
Paternoster Chop House
Lamb and Trotter
Club Gascon



New Street Square
One New Change

TALK TO US

Viewing is strictly by prior appointment with Rubix.

Jack Hardwood
E: jack@rubix.london
M: +44(0)7591 829 278

Harry Radcliffe
E: harry@rubix.london
M: +44(0)7796 217 354

Oliver Hawking
E: oliver@rubix.london
M: +44(0)7714 145 970

Disclaimer - Rubix Real Estate Ltd for themselves and for the vendors or lessors of this property whose agents they are given notice that:- (1) The particulars are set out as a general outline for the guidance of the intending purchasers and do not constitute part of an offer or contract; (2) All descriptions, dimensions, references to condition and necessary permissions for use and occupation and other details are given without responsibility and any intending purchasers should not rely on them as standards or representations of fact but must satisfy themselves by inspection or otherwise as to the correctness of each of them; (3) No persons in the employment of Rubix Real Estate Ltd has any authority to make or give any representation or warranty whatsoever in relation to this property.