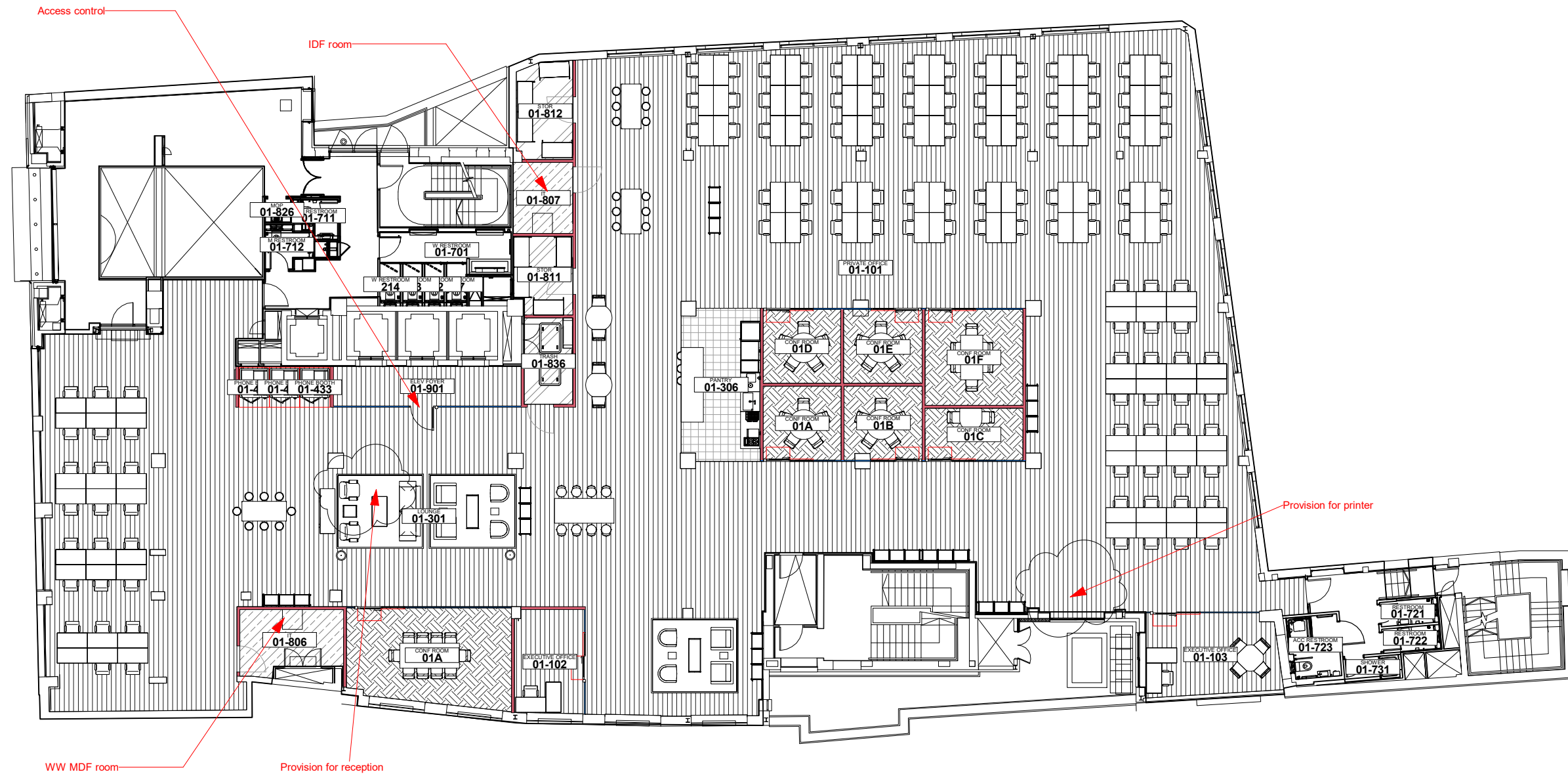


Exposed ceiling.
Coordinate partition with existing MEP system.



The diagram consists of two columns. The left column is titled 'Program' and contains six colored boxes: 'Work' (light blue), 'Meet' (light green), 'We' (yellow), 'Circulate' (light orange), 'Operate' (light grey), and 'Wash' (light grey). The right column is titled 'Wall Types' and contains four colored boxes: 'Existing' (dark grey), 'Storefront' (blue), 'Gyp Wall' (red), and 'Branding' (magenta).