

THIS DRAWING IS THE COPYRIGHT OF HUNTS OFFICE AND SHOULD NOT BE USED, COPIED OR ALTERED BY A THIRD PARTY WITHOUT PRIOR WRITTEN CONSENT.

HUNTS OFFICE WILL NOT ACCEPT RESPONSIBILITY FOR THE ACCURACY OF PLANS SUPPLIED BY A THIRD PARTY.

THIS DRAWING IS SUBJECT TO CHANGE DUE TO POTENTIAL THIRD PARTY CONSTRUCTION WORK. ONCE THE STRUCTURAL ALTERATIONS HAVE BEEN MADE, AN ADDITIONAL SURVEY WILL BE REQUIRED.

PLEASE NOTE THAT THIS DRAWING HAS ORIGINATED FROM A THIRD PARTY SURVEY OR DRAWING.



B	23.09.2	HP	CLIENT COMMENTS 22.09.25
A	5	HP	CLIENT COMMENTS 18.09.25
REV:	23.09.2	BY:	DESCRIPTION:
	5		

PROPOSAL



01494 256424 WEST END RD 1 HIGH WYCOMBE 1 HP11 2QQ HUNTSOFFICE.CO.UK

CLIENT:
PEMBREY ASSET MANAGEMENT

PROJECT DETAILS:

35 KING STREET, LONDON EC2V 8EH

DWG No:	PDR-2001-HUNTS-01-FF-100	REV:	B
AM:	DB:	SCALE:	
L.MEZIANI	H.PUTTICK	A3 @ 1:100	

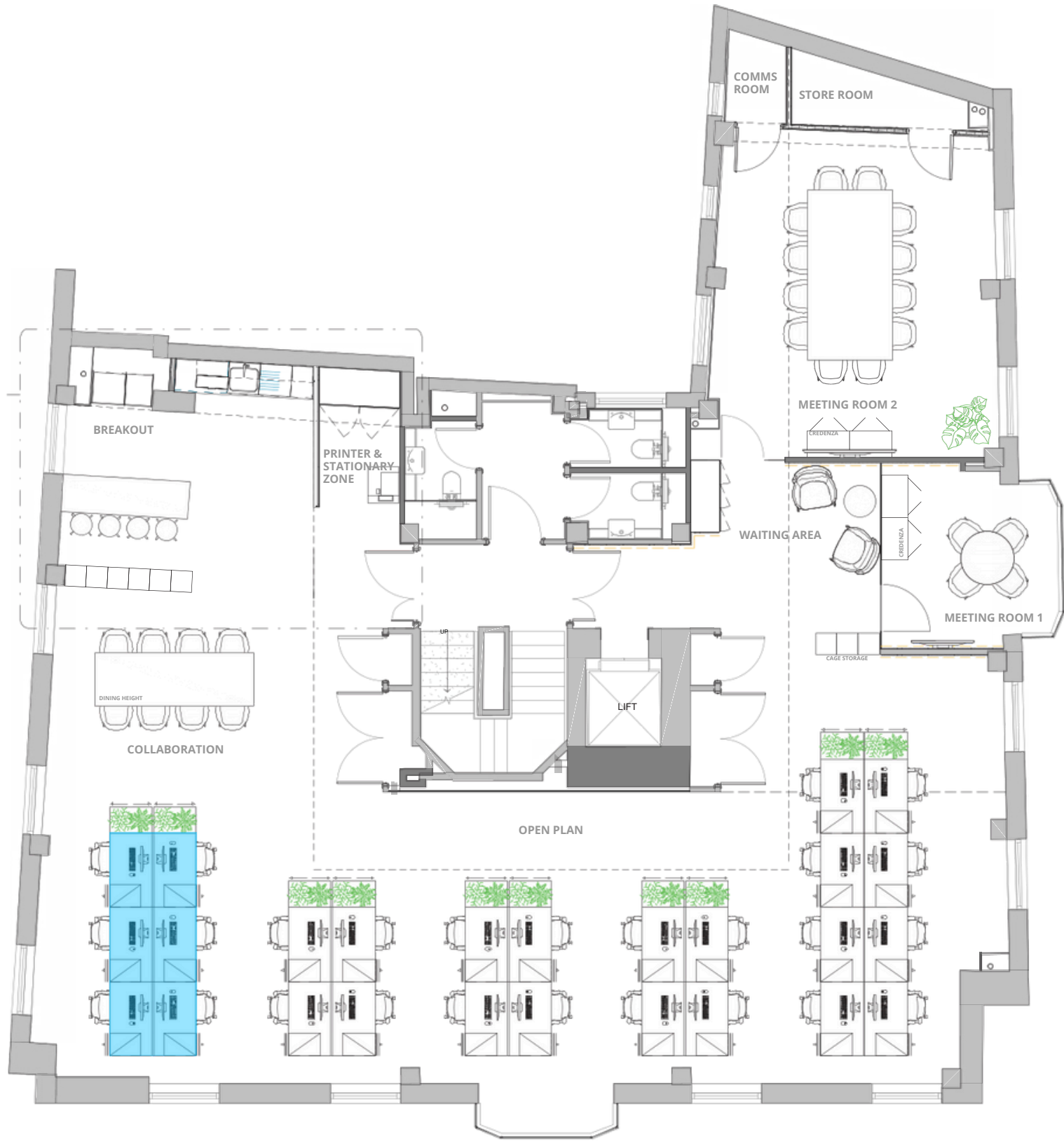
FIRST FLOOR GA

THIS DRAWING IS THE COPYRIGHT OF HUNTS OFFICE AND SHOULD NOT BE USED, COPIED OR ALTERED BY A THIRD PARTY WITHOUT PRIOR WRITTEN CONSENT.
HUNTS OFFICE WILL NOT ACCEPT RESPONSIBILITY FOR THE ACCURACY OF PLANS SUPPLIED BY A THIRD PARTY.

THIS DRAWING IS SUBJECT TO CHANGE DUE TO POTENTIAL THIRD PARTY CONSTRUCTION WORK. ONCE THE STRUCTURAL ALTERATIONS HAVE BEEN MADE, AN ADDITIONAL SURVEY WILL BE REQUIRED.

PLEASE NOTE THAT THIS DRAWING HAS ORIGINATED FROM A THIRD PARTY SURVEY OR DRAWING.

 = MOVED FURNITURE



B	23.09.2	HP	CLIENT COMMENTS 22.09.25
A	5	HP	CLIENT COMMENTS 18.09.25
REV:	23.09.2	BY:	DESCRIPTION:
	5		

PROPOSAL



01494 256424 WEST END RD 1 HIGH WYCOMBE 1 HP11 2QQ HUNTSOFFICE.CO.UK

CLIENT: PEMBREY ASSET MANAGEMENT		
PROJECT DETAILS: 35 KING STREET, LONDON EC2V 8EH		
DWG No:	PDR-2001-HUNTS-01-3F-100	REV: B
AM: L.MEZIANI	DB: H.PUTTICK	SCALE: A3 @ 1:100
THIRD FLOOR GA		