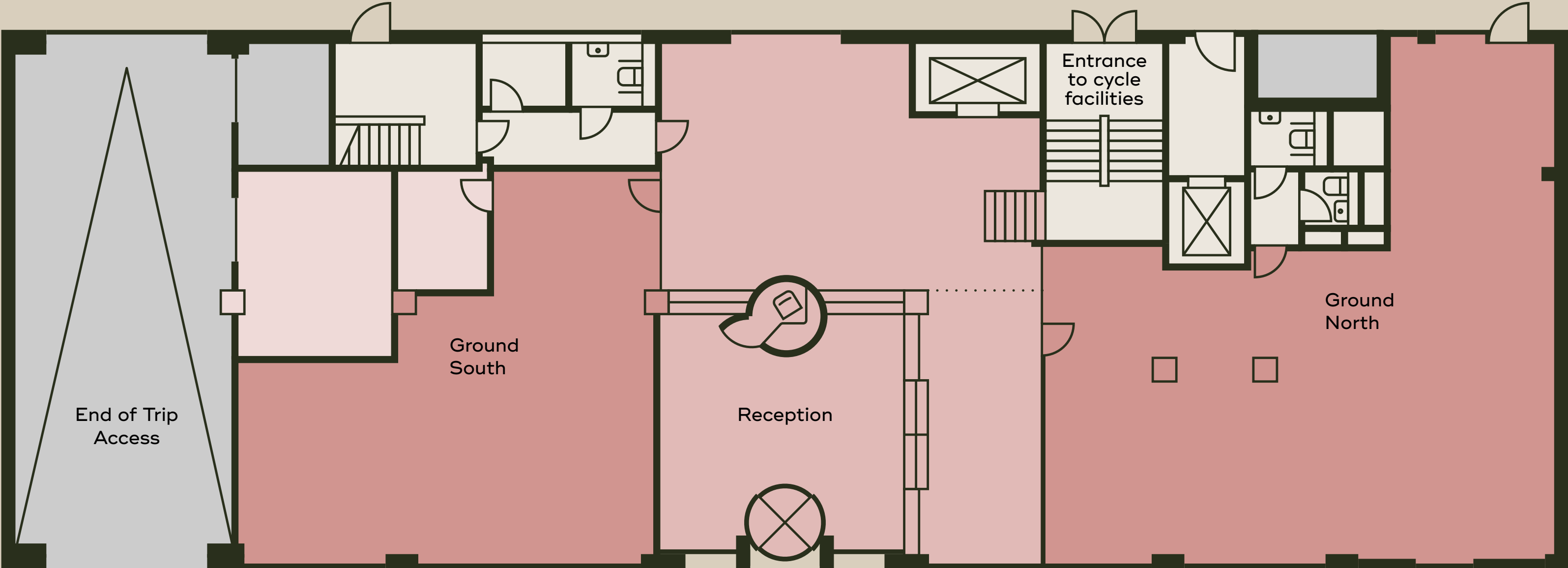




GROUND FLOOR

3,561 SQ FT

- RECEPTION 1,302 SQ FT
- OFFICES 2,258 SQ FT (North and South)



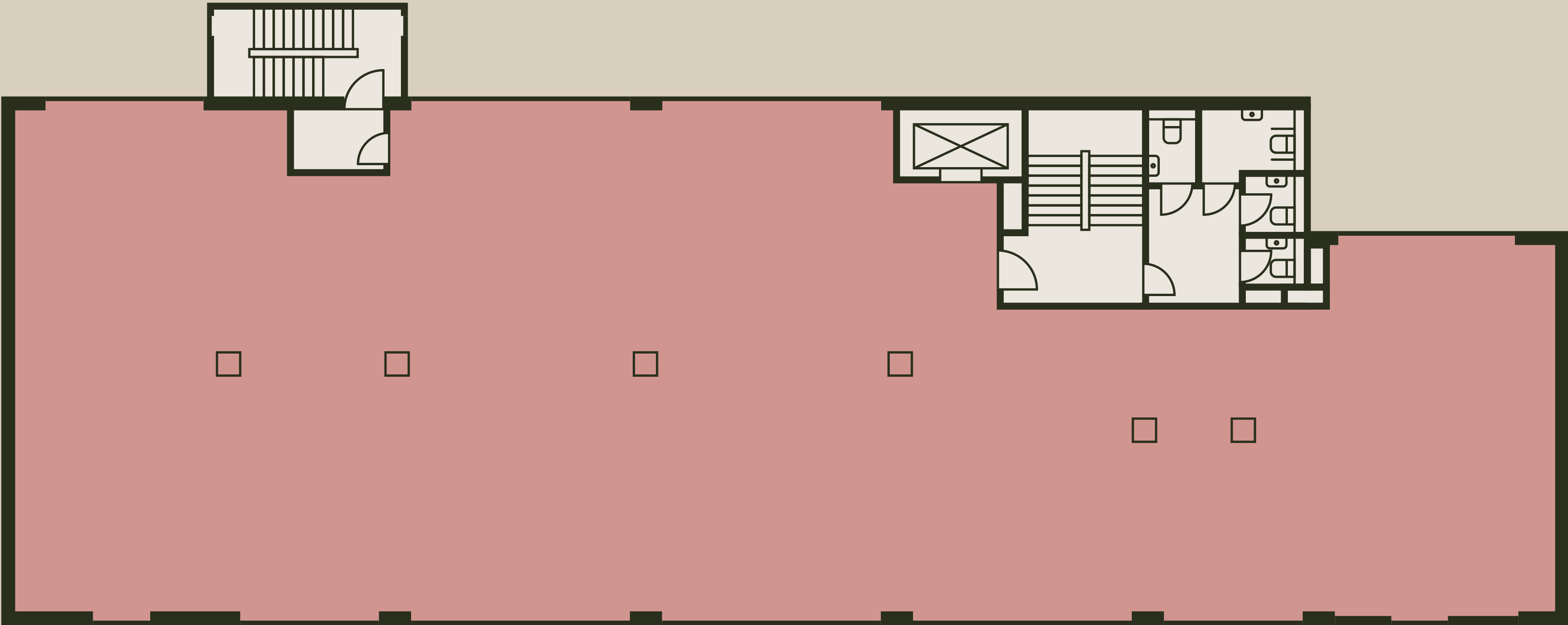
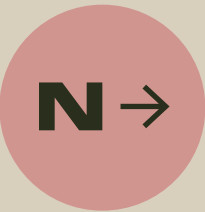
BAYHAM ST

PLANS NOT TO SCALE.
FOR INDICATIVE PURPOSES ONLY.

1-3

FIRST—THIRD FLOOR

4,820 SQ FT



BAYHAM ST

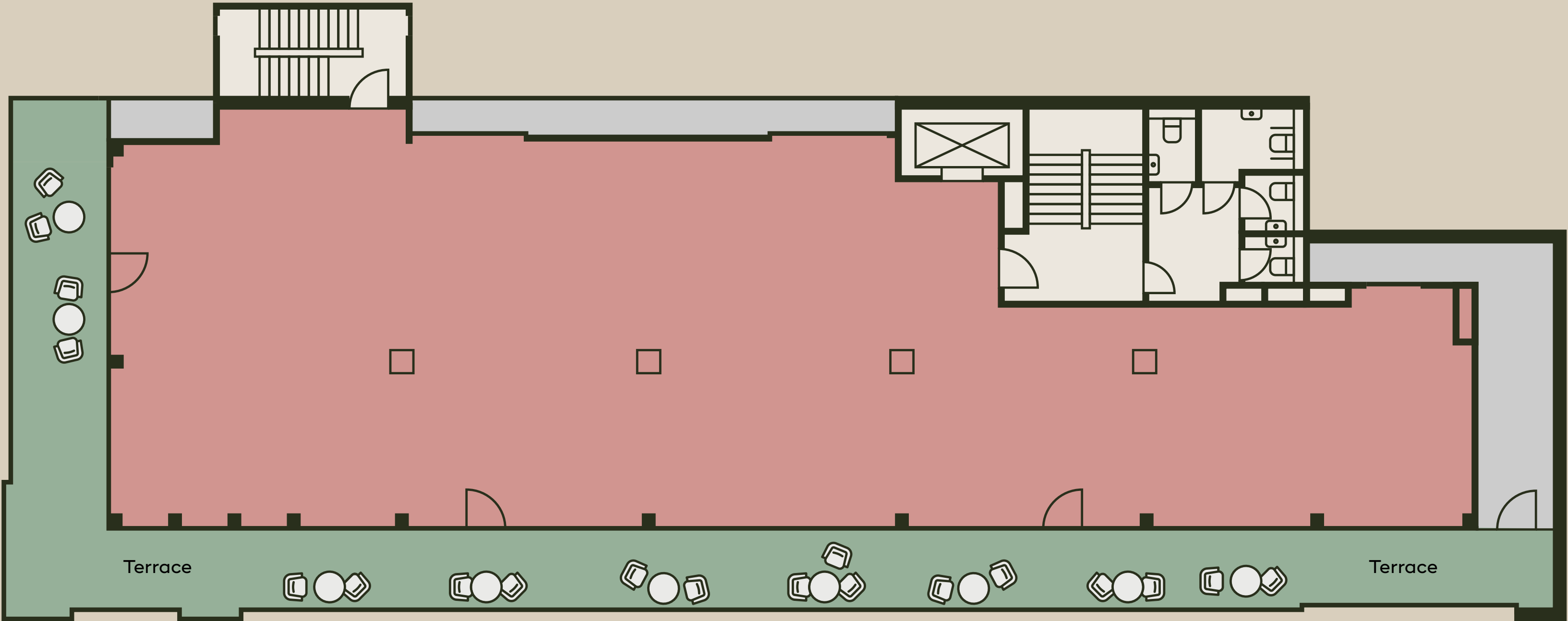
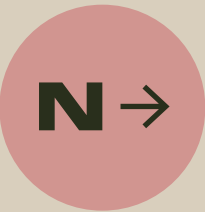
PLANS NOT TO SCALE.
FOR INDICATIVE PURPOSES ONLY.

4

FOURTH FLOOR

3,315 SQ FT

PLUS 1,232 SQ FT TERRACE

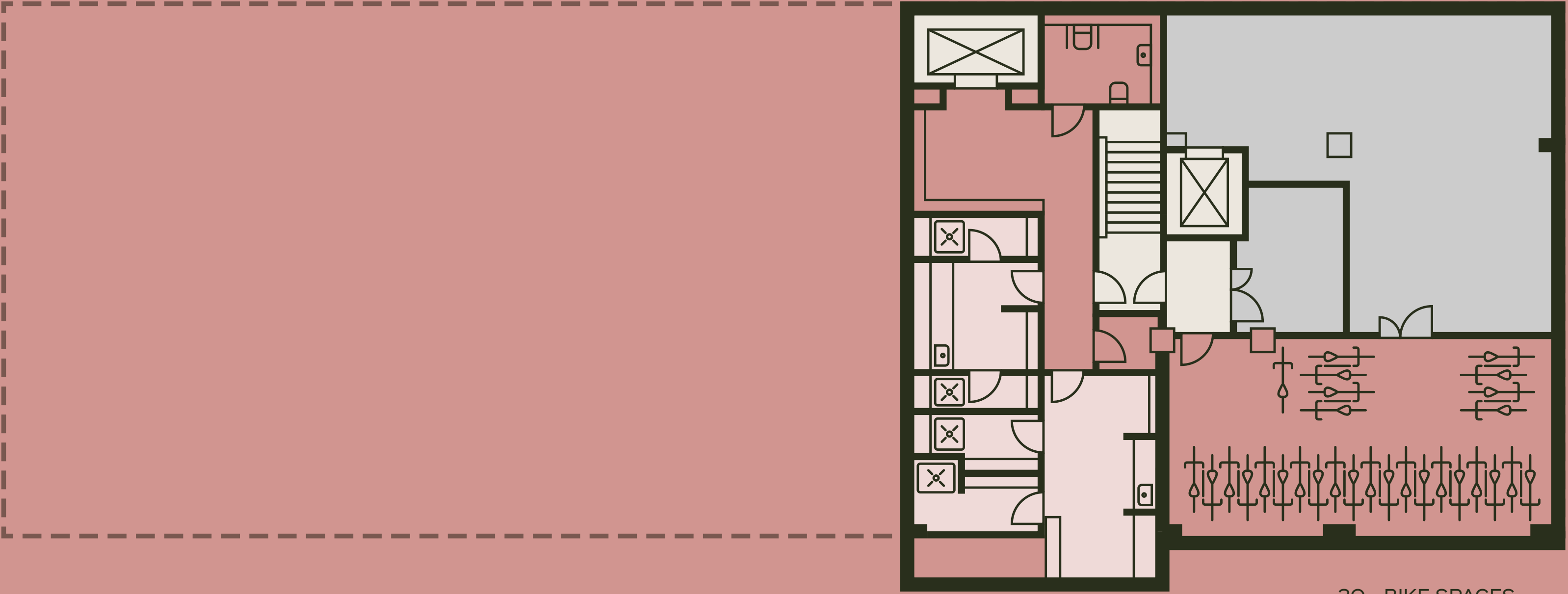


BAYHAM ST

PLANS NOT TO SCALE.
FOR INDICATIVE PURPOSES ONLY.

LG

CYCLE SUITE
2,508 SQ FT



BAYHAM ST

- 30 BIKE SPACES
- 4 SHOWERS
- 50 LOCKERS

PLANS NOT TO SCALE.
FOR INDICATIVE PURPOSES ONLY.

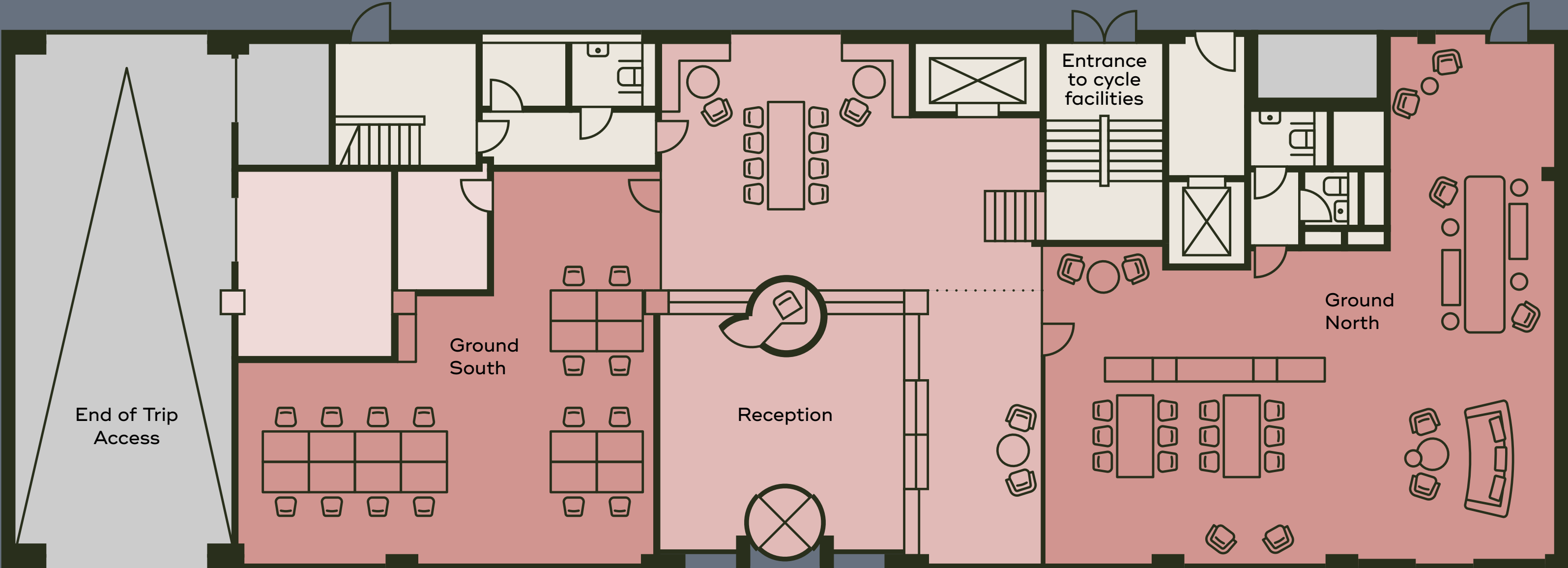


SPACE PLANS

GROUND FLOOR



- OFFICE
- 16 x DESKS
 - FLEXIBLE LOUNGE
 - RECEPTION / COMMUNAL



BAYHAM ST

PLANS NOT TO SCALE.
FOR INDICATIVE PURPOSES ONLY.

SPACE PLANS

FIRST—THIRD FLOOR

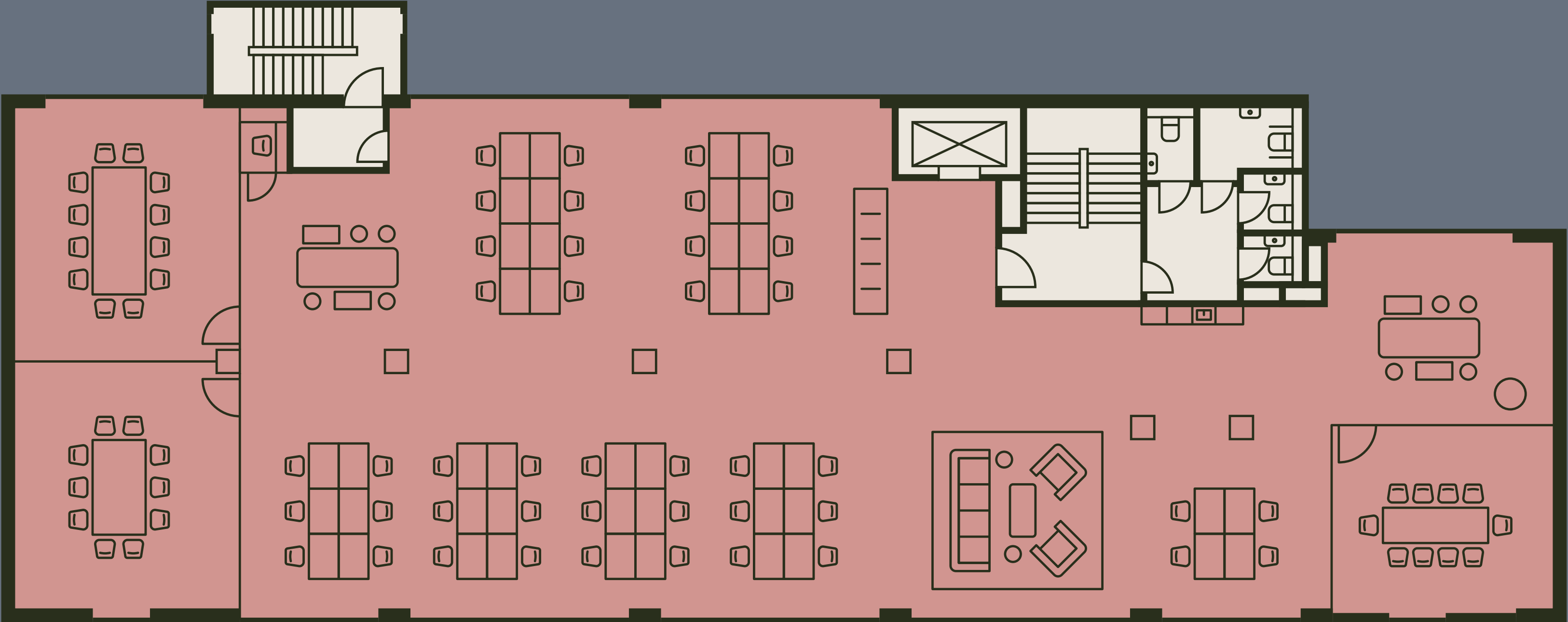


OFFICE

- 44 x DESKS
- 1 x KITCHENETTE
- 4 x BREAKOUT AREAS

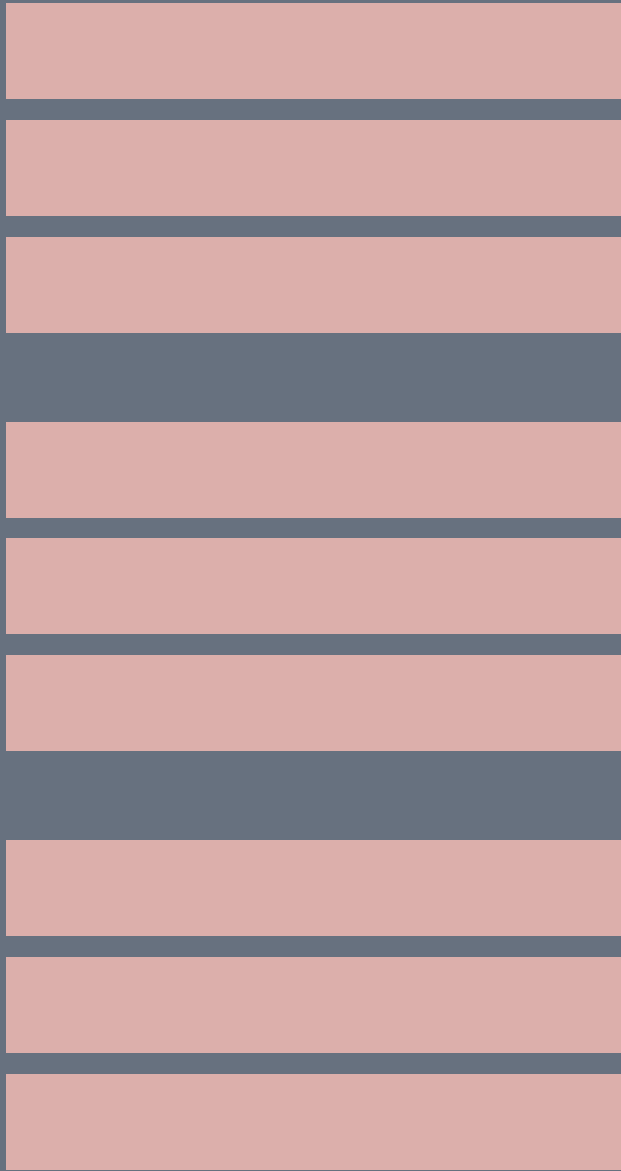
MEETING ROOMS

- 1 x 12 PERSON
- 2 x 10 PERSON
- 1 x CALL BOOTH



BAYHAM ST

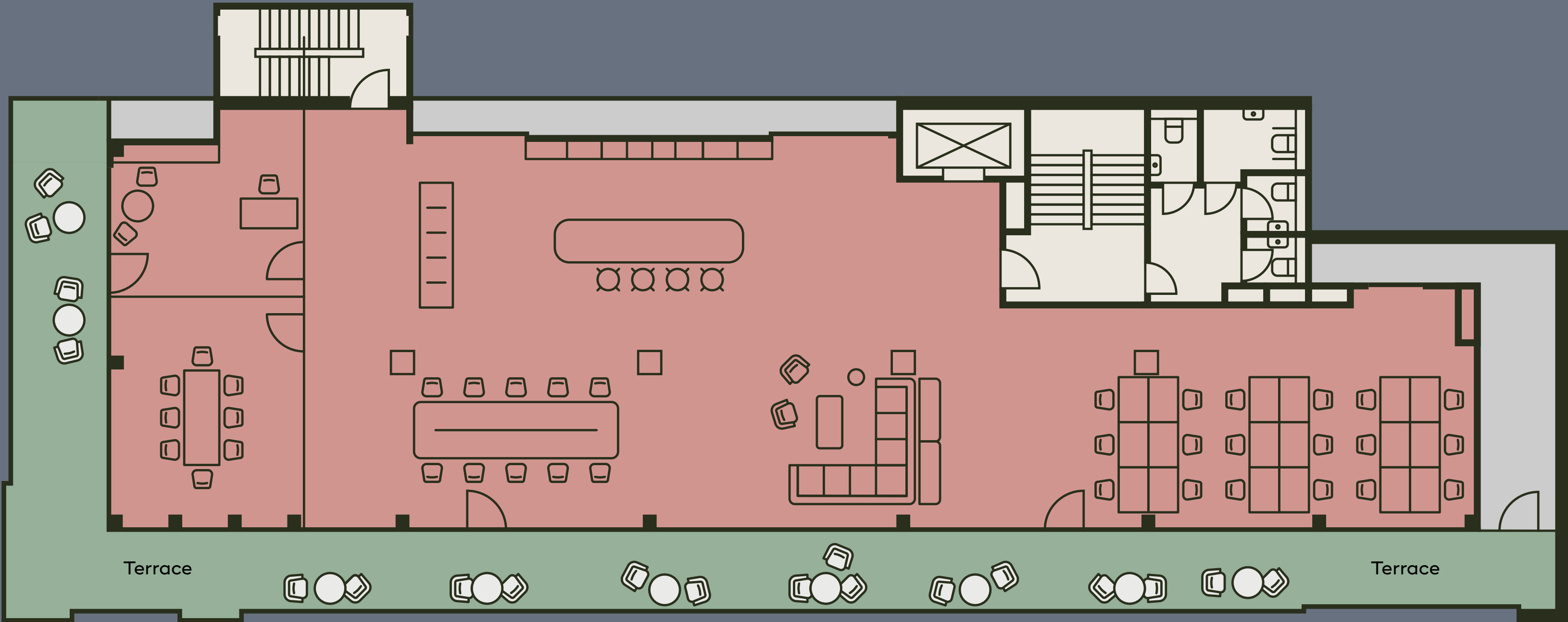
PLANS NOT TO SCALE.
FOR INDICATIVE PURPOSES ONLY.



SPACE PLANS

FOURTH FLOOR

- OPEN OFFICE
- 30 x DESKS
 - 1 x KITCHENETTE
 - 3 x BREAKOUT AREAS
- MEETING ROOMS
- 1 x 8 PERSON
 - 1 x PRIVATE ROOM
- TERRACE AND GREEN ROOF



BAYHAM ST

PLANS NOT TO SCALE.
FOR INDICATIVE PURPOSES ONLY.

