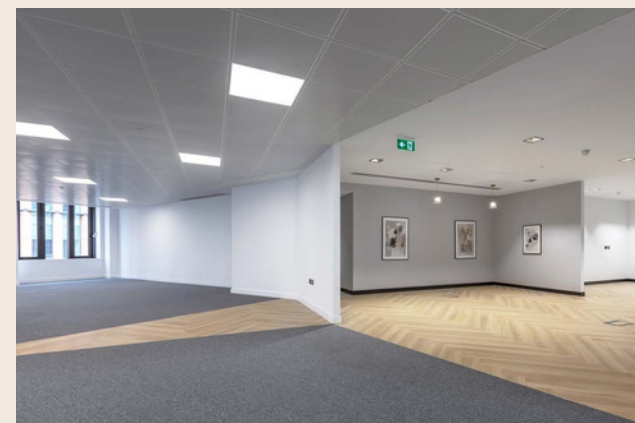
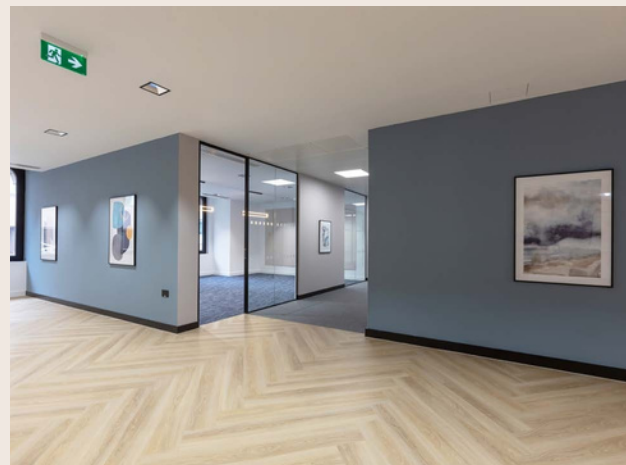


RUBIX

24 MARTIN  
LANE EC4

# Open plan fitted offices moments' walk from Bank & Monument stations

Martin Lane meets with Cannon Street directly opposite the new entrance to Bank underground station. It is ideally located for the amenities of Bloomberg Arcade, Leadenhall Market and Borough market just across the river.



## AMENITIES

E



NEWLY REFURBISHED OFFICE SPACE



24 HOUR ACCESS



50-70 OPEN PLAN DESKS



BIKE RACKS & SHOWER FACILITIES



2 LIFTS



AIR CONDITIONING



NEW LED LIGHTING



MANNED RECEPTION



TERRACE / OUTSIDE SPACE

# THE CITY



# AVAILABILITY

FLOOR	SQ M	SQ FT	RENT/PSF	RATES/PSF	S.C/PSF	TOTAL/MONTH
3RD	523.69	5,637	£59.50	£20.14	£20.34	£44,800.06
2ND	522.58	5,625	£59.50	£20.14	£18.72	£44,704.69
1st	429.49	4,623	£59.50	£20.14	£20.34	UO

TERMS: NEW LEASE AVAILABLE DIRECT FROM THE LANDLORD.

# LOCATION



# TALK TO US

Viewing is strictly by prior appointment with Rubix.

**Oliver Hawking**

E: [oliver@rubix.london](mailto:oliver@rubix.london)  
M: +44(0)7714145970

**Harry Radcliffe**

E: [harry@rubix.london](mailto:harry@rubix.london)  
M: +44(0)7796 217 354

Disclaimer - Rubix Real Estate Ltd for themselves and for the vendors or lessors of this property whose agents they are given notice that:- (1) The particulars are set out as a general outline for the guidance of the intending purchasers and do not constitute part of an offer or contract; (2) All descriptions, dimensions, references to condition and necessary permissions for use and occupation and other details are given without responsibility and any intending purchasers should not rely on them as standards or representations of fact but must satisfy themselves by inspection or otherwise as to the correctness of each of them; (3) No persons in the employment of Rubix Real Estate Ltd has any authority to make or give any representation or warranty whatsoever in relation to this property.