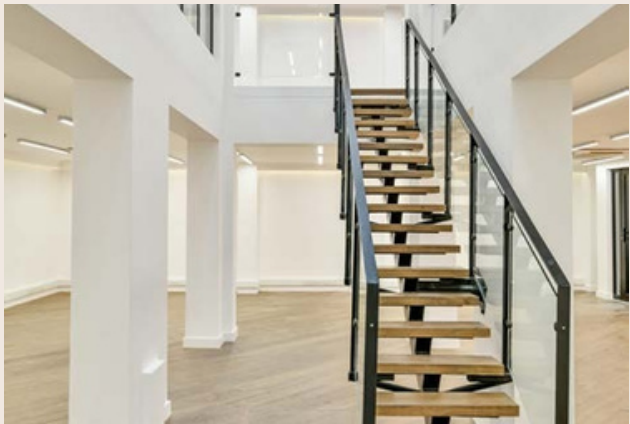


RUBIX

SILVERLIGHT  
HOUSE EC2

# A stylishly finished building in the heart of Shoreditch

Silverlight House offers a number of fully fitted and furnished spaces to suit all businesses. This contemporary workspace provides the perfect balance between professional functionality and aesthetic appeal. It has been thoughtfully curated, with high-spec finishes, quality furnishings, and abundant natural light. Perfect for a growing start-up or an established brand, available now on flexible lease terms.



## AMENITIES



NEWLY  
REFURBISHED  
OFFICE SPACE



BIKE & SHOWER FACILITIES



LED LIGHTING



AIR CONDITIONING



FIBRE INSTALLED



24/7 ACCESS



1 LIFT



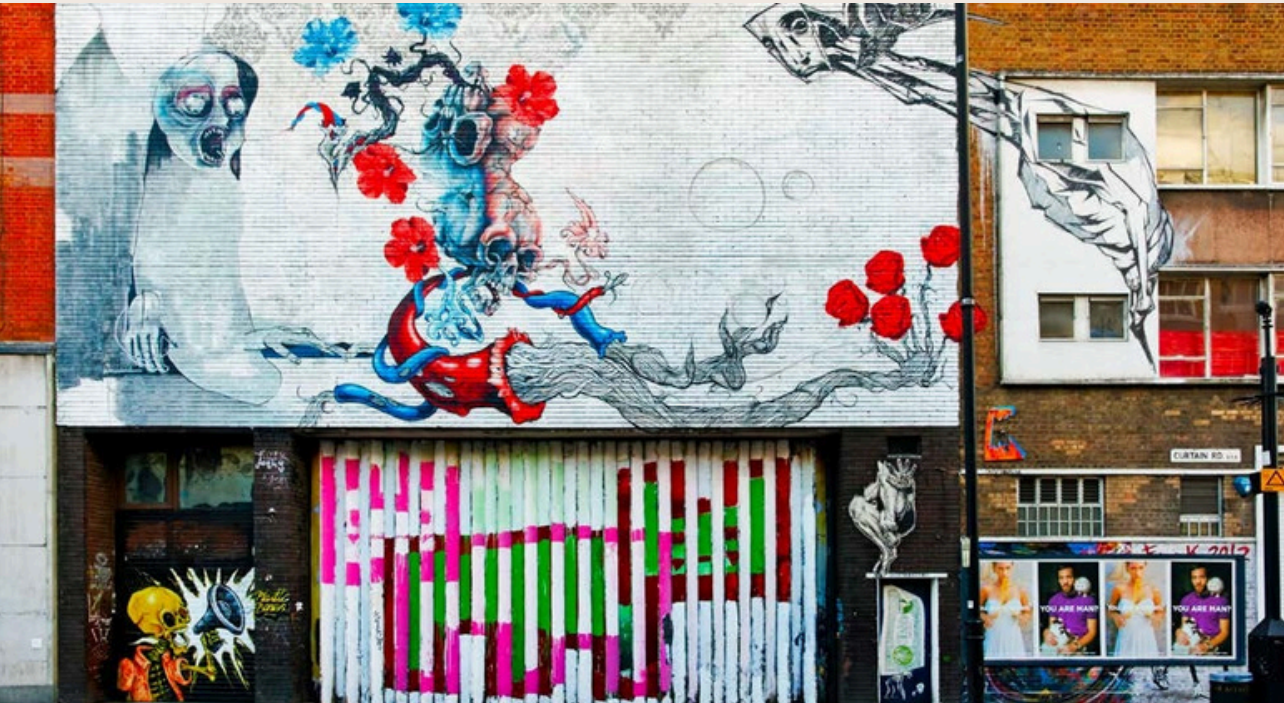
OPENABLE WINDOWS



EXPOSED SERVICES



# SHOREDITCH & HOXTON



# AVAILABILITY

FLOOR	SQM	SQFT	RENT/PSF	S.C/PSF	RATES/PSF	TOTAL/MONTH
3rd floor	237.00	2,551	£49.50	£22.73	£4.50	£18,543.64
2nd floor	63.64	685	£49.50	£22.73	£4.50	£4,979.38
1st floor	60.39	650	£49.50	£22.73	£4.50	£4,724.96
Ground Duplex	261.43	2,814	£49.50	£22.73	£4.50	£19,869.19

TERMS: NEW LEASE DIRECT FROM THE LANDLORD.

# LOCATION



# TALK TO US

Viewing is strictly by prior appointment with Rubix.

Harry Radcliffe  
E: [harry@rubix.london](mailto:harry@rubix.london)  
M: +44(0)7796217354

Jack Harwood  
E: [Jack@rubix.london](mailto:Jack@rubix.london)  
M: +44(0)7591 829 278

Oliver Hawking  
E: [oliver@rubix.london](mailto:oliver@rubix.london)  
M: +44(0)7714 145 970

Disclaimer - Rubix Real Estate Ltd for themselves and for the vendors or lessors of this property whose agents they are given notice that:- (1) The particulars are set out as a general outline for the guidance of the intending purchasers and do not constitute part of an offer or contract; (2) All descriptions, dimensions, references to condition and necessary permissions for use and occupation and other details are given without responsibility and any intending purchasers should not rely on them as standards or representations of fact but must satisfy themselves by inspection or otherwise as to the correctness of each of them; (3) No persons in the employment of Rubix Real Estate Ltd has any authority to make or give any representation or warranty whatsoever in relation to this property.