

The background features a dark teal color with diagonal, textured brushstrokes. Overlaid on this are several vertical, semi-transparent bars of varying heights and widths, creating a modern, architectural feel.

CHRISTOPHER YARD

67 WILSON STREET EC2

6,300 sq ft high-end boutique headquarters opportunity



CHRISTOPHER YARD

YOUR OWN BUILDING

A rare single-let HQ opportunity.



Courtyard and building entrance



Entrance to courtyard

Christopher Yard offers a 6,300 sq ft high-end boutique headquarters opportunity. The building has its own entrance, accessed off Wilson Street and a courtyard providing outdoor space at Ground floor level. Internally the building offers exceptionally high quality finishes, with a welcoming arrival / reception area with feature pendant lighting. The space has been finished to a CAT A condition with exposed concrete and timber extensions. This design led workspace could be the perfect HQ to shape your business.

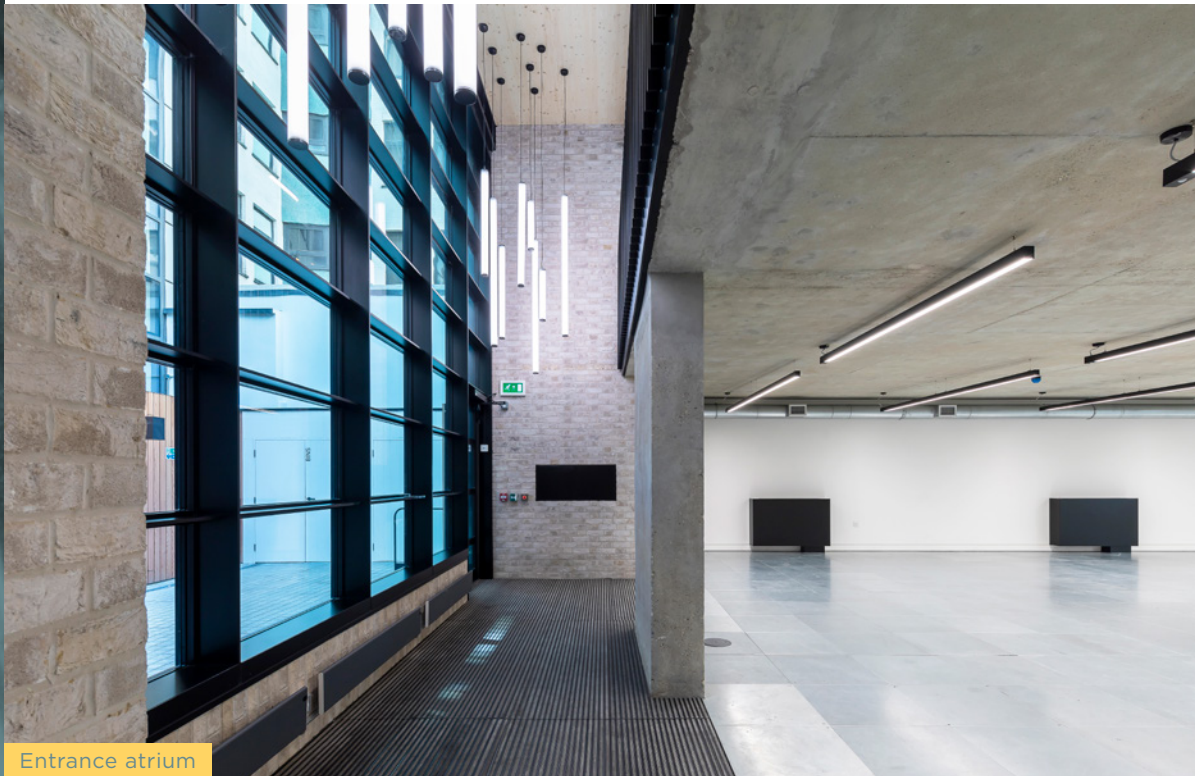


CHRISTOPHER YARD



STRIKING FEATURES

The 1st Floor provides 2,235 sq ft of CAT A workspace, centered around a striking skylight and the atrium with standout lighting, plus a feature podium overlooking the external courtyard.



Boutique headquarters building



Reception area with feature pendant lighting



Courtyard providing outdoor space



High-quality finishes



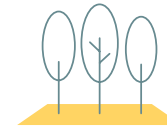
Design-led workspace



New end of trip facilities featuring 36 cycle racks, showers & lockers



Excellent transport links including the Elizabeth Line



Close proximity to Finsbury Square garden



On site parking



EPC rating B

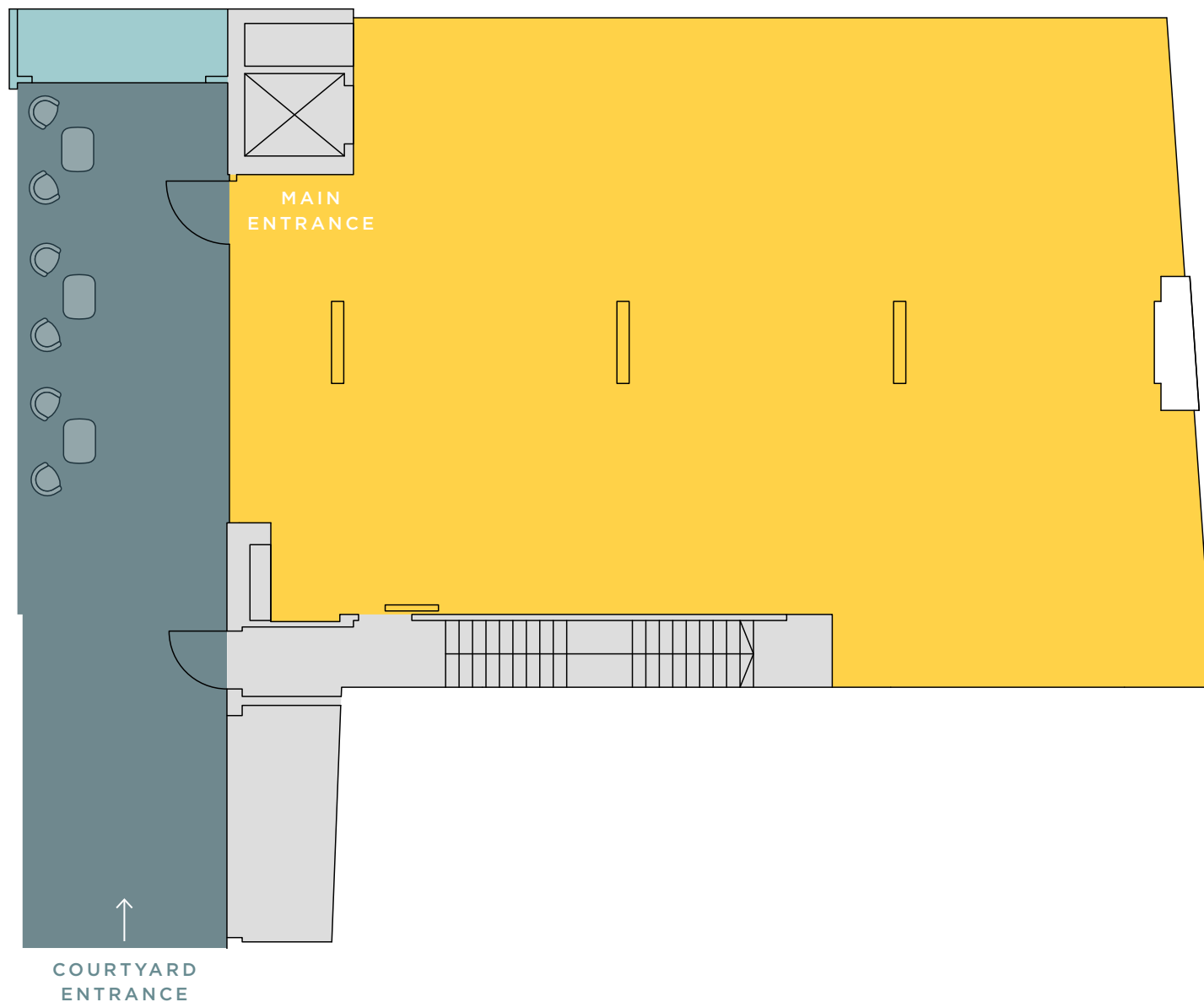


GROUND FLOOR

2,081 sq ft / 193.3 sq m (NIA)

- Available workspace
- Courtyard
- Bin storage
- Core

FLOOR	SQ FT	SQ M
1ST	2,235	207.6
G	2,081	193.3
LG	1,985	184.4
TOTAL	6,301	585.3



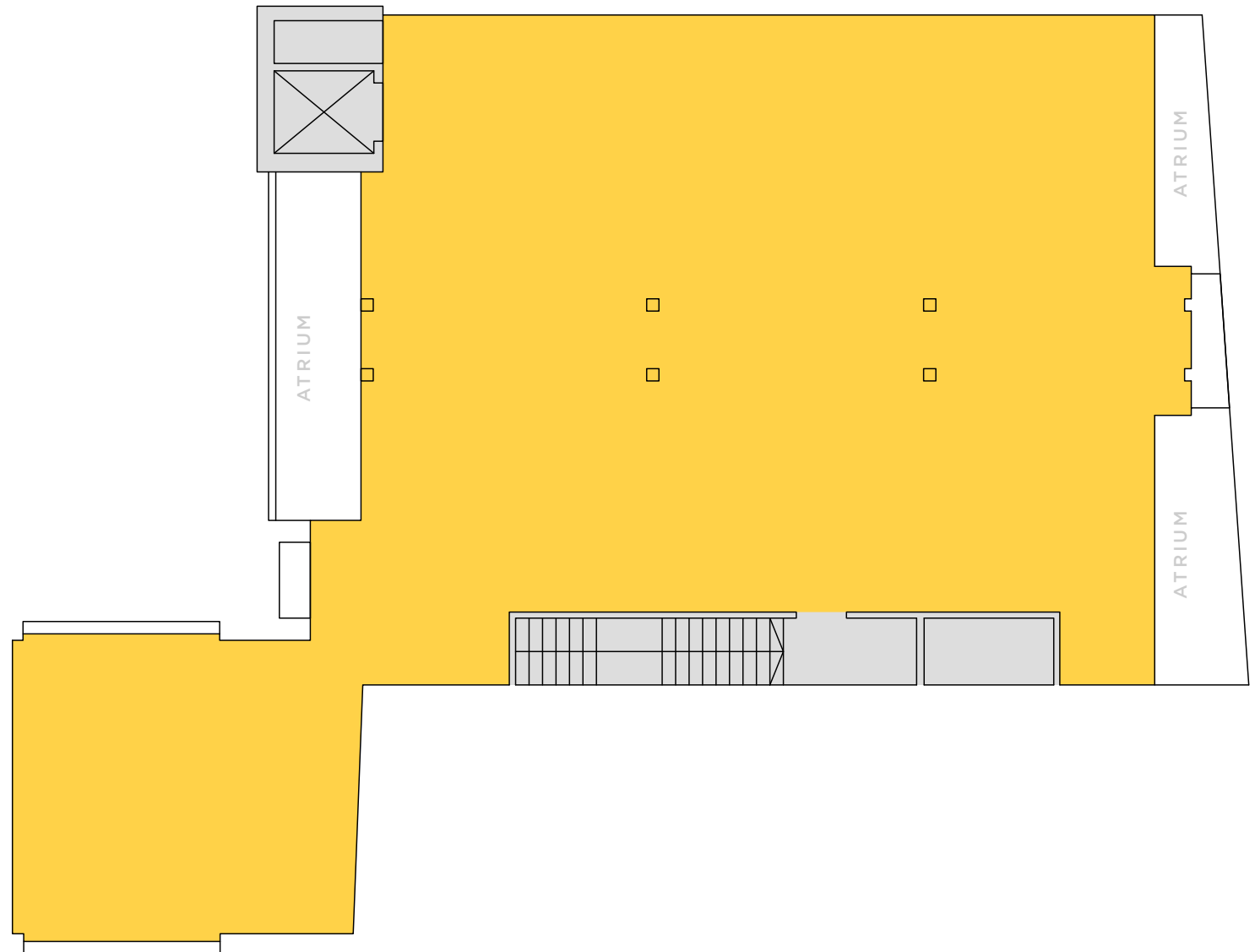
WILSON STREET



FIRST FLOOR

2,235 sq ft / 207.6 sq m (NIA)

- Available workspace
- Core



FLOOR	SQ FT	SQ M
1ST	2,235	207.6
G	2,081	193.3
LG	1,985	184.4
TOTAL	6,301	585.3

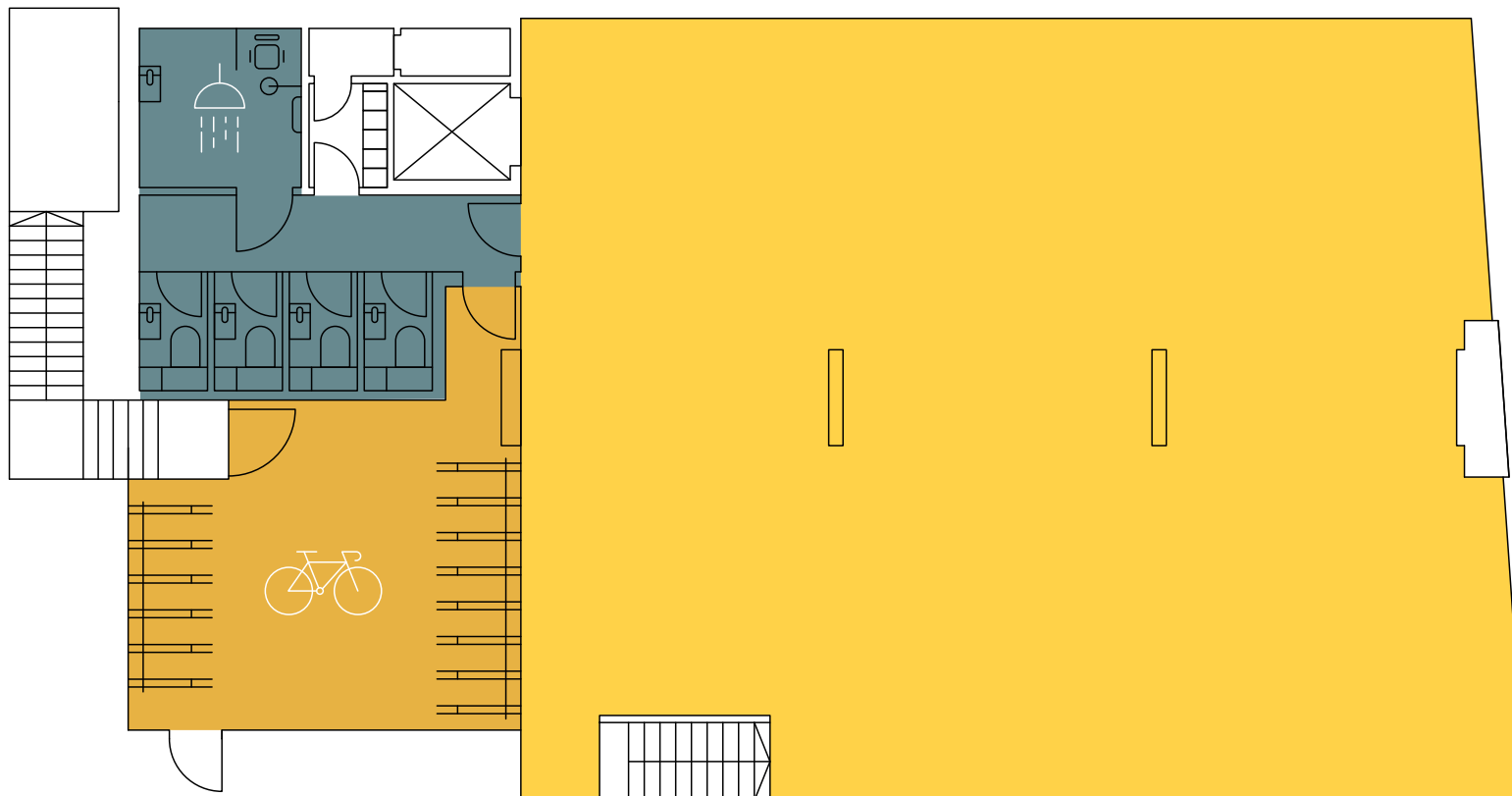
WILSON STREET



LOWER GROUND

1,985 sq ft / 184.4 sq m (NIA)

- Available workspace
- WC's and shower facilities
- Bike storage
- Core



FLOOR	SQ FT	SQ M
1ST	2,235	207.6
G	2,081	193.3
LG	1,985	184.4
TOTAL	6,301	585.3



CHRISTOPHER YARD

VIBRANT & ECLECTIC

The building is perfectly placed between The City and lively Shoreditch. With an eclectic mix of restaurants, street food markets and vibrant cafés, the location is buzzing. The area is home to some of London's best health clubs with Barry's Bootcamp, 1 Rebel and Thirdspace all within close proximity. Liverpool Street, Moorgate and Old Street Stations are all within a 6-minute walk, providing access to the Elizabeth Line, Underground, Overground and National rail.



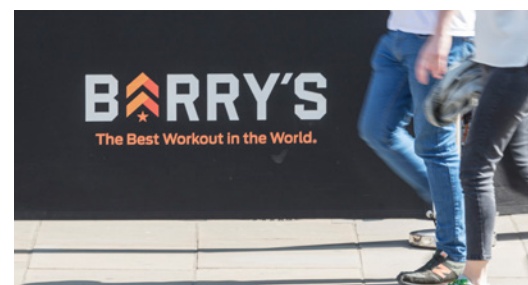
Whitecross Market



Finsbury Square



Broadgate Circle



RESTAURANTS

1. Monohon Ramen
2. Pasta Nostra
3. Officiiana OO
4. Noci
5. Daffodil Mulligan
6. Lantana
7. Leonard St Market
8. Bottega Prelibato
9. Blacklock
10. Gloria
11. Sagardi
12. Flat Iron
13. Manteca
14. Padella
15. The Iskele
16. Jugged Hare
17. The Brewery
18. Clifton Food Market
19. Camino
20. Piccolino
21. Yauatcha
22. Comptoir Libanais
23. The Ivy City Garden
24. Eataly

BARS

1. Tayer + Elementary
2. Serata Hall
3. The Princess of Shoreditch
4. The Artillery Arms
5. The Windmill in the City
6. Flight Club
7. Junkyard Golf
8. Queen of Hoxton

HOTELS

1. The Hoxton
2. Nobu
3. The Curtain
4. Montcalm Royal London House
5. Montcalm Brewery

GYMS

1. Gymbox
2. Virgin Active
3. Barry's
4. Third Space
5. 1 Rebel

CAFÉS

1. Grind
2. Ozone
3. FWD:Coffee



CHRISTOPHER YARD

67 WILSON STREET EC2



RUBIX

HUGH TAYLER

07801 959 513

hugh.tayler@jll.com

MATTHEW MYCOCK

07976 920 529

matthew.mycock@jll.com

GEORGE REYNOLDS

07754 835 744

george@rubix.london

CHRIS COMMINS

07904 131 351

chris@rubix.london

CHEYANNE THOMPSON

07752 467 427

cheyanne.thompson@jll.com

JAIMIE FERREIRA

07841 522 239

jaimie@rubix.london

Important notice relating to the Misrepresentation Act 1967 and the Property Misdescriptions Act 1991: (i) the particulars are set out as a general outline only for guidance of intending purchasers or lessees and do not constitute, nor constitute part of, an offer or contract (ii) all descriptions, dimensions, references to condition and necessary permission for use and occupation, and other details are given in good faith and are believed to be correct, but any intending purchasers or occupiers should not rely on them as statements or representations of fact, but must satisfy themselves by inspection or otherwise as to the correctness of each of them. December 2025

Marketing: [Stuart Chapman Design](#)