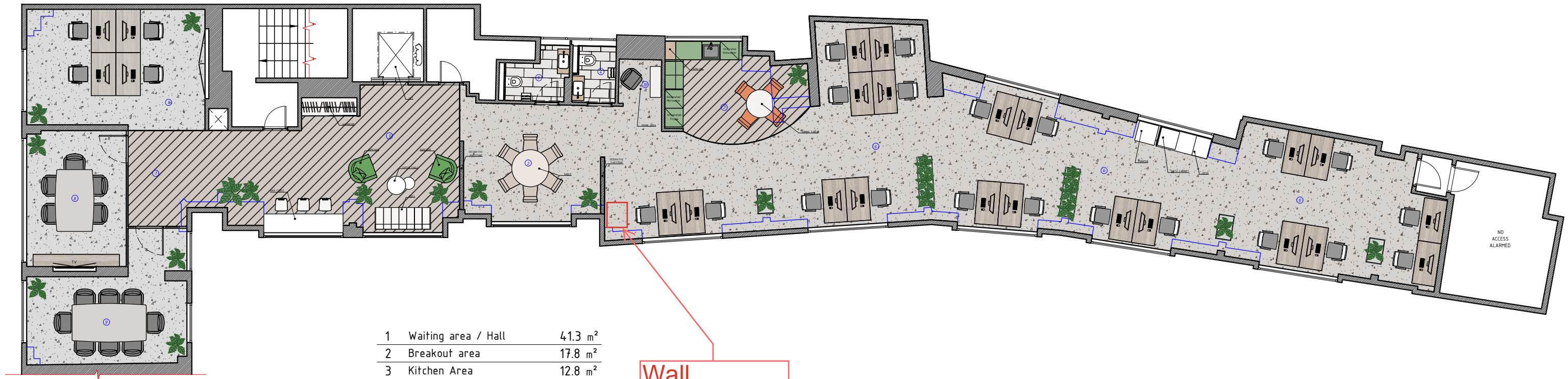


Total desks: 24



1	Waiting area / Hall	41.3 m ²
2	Breakout area	17.8 m ²
3	Kitchen Area	12.8 m ²
4	Men's WC	2.6 m ²
5	Women's WC	3.2 m ²
6	Open space	116.0 m ²
7	Meeting room 1	21.9 m ²
8	Meeting room 2	14.2 m ²
9	Meeting room 3	17.3 m ²
10	Phone area	2.0 m ²

Wall mounted data cabinet.

This drawing may not be copied, reproduced or given to any third parties for any reason whatsoever without the written permission of Interactive Space Consulting Limited.
Please note this drawing is protected under Copyright and remains the property of Interactive Space Consulting Limited at all times.
All dimensions must be checked on site and not scaled from the drawing. Proposals are subject to approvals by statutory authorities.

- Refer to accommodation and finishes schedule for details.
- Design intent drawing only - all elements are to be developed and integrated by the contractor for approval by the designer.
- Refer to accommodation and finishes schedule for details.
- Design intent drawing only - all elements are to be developed and integrated by the contractor for approval by the designer.
- This drawing is to be in conjunction with the Interactive Space Consulting Limited schedule of works which will override any discrepancy with the drawing.
- This drawing is to be read in conjunction with all associated schedules:
 - door schedule, furniture schedule, graphics schedule, CDM risk assessments and all specifications.
- Goods fit, dimensions to be confirmed.
- All joinery to be manufactured in sections to fit site assembly via the goods lift.
- Refer to referenced drawings for all elements equipment.

1

REVISION	DESCRIPTION	DATE	DRAWN
DRAWING STATUS:			

SITE ADDRESS:

DRAWING TITLE:

DRAWING NO: 2

SCALE: 1/125

DATE:	19/06/2025
-------	------------

DRAWN BY:

LAYOUT TAB: